

REF 14115 : HABILITATION Recycling

This training allows the persons concerned :

- To prepare, analyse and carry out an electrical operation on a work or installation or on a consigned device.
- Acquire knowledge of electrical risks
- An upgrade on the prerogatives of the UTE C18510-1 regulation.

PROGRAMME, VARIABLE IN FUNCTION OF HABILITATION :

WLE

In the field of knowledge :

- Define the principles of empowerment and the limits.
- To name the documents applicable in the context of de-energized work.
- List the preventive measures to be observed during work.
- State the risks related to the use and handling of materials and tools used specific to the work.
- Identify the collective protective equipment.
- Knowledge of the various possible electrical operations (VAT, consignment operation, etc.).

In the field of know-how :

- Follow the instructions given by the Electrical Operating Manager or the Consignment Manager.
- Report on his activity if necessary.
- Organize, delimit and mark the work area.
- Write the documents applicable within the framework of the work.
- To respect and enforce the safety rules and instructions.
- Identify, check and use the appropriate equipment and tools.
- Identify the structures and environmental areas subject to the work.
- Analyse the risks for a given situation and corresponding to the clearance in question.
- Ensure the monitoring and prevention of risks on an operation
- Carry out a specific operation in complete safety (consignment...)



AUDIENCE

Personnel of the maintenance teams required to carry out an electrical operation on a HVB electrical installation or in the vicinity..



EVALUATION

Duration of the theoretical test per candidate: 1 hour
Duration of the practical test per candidate: 30 minutes
A certificate of participation in the course will be delivered at the end of the session, and a positive or negative assessment will be given individually following the theoretical and practical evaluation.



DURATION

Total duration (training and certification): variable depending on the habilitation.

This training material is the exclusive property of WLEnergy SAS - Any representation or reproduction, even partial, is illicit and may constitute an act of counterfeiting.

WLEnergy SAS

17 rue de l'Amiral Hamelin 75116 Paris - melina@wleenergy.fr - Tel : 01 45 05 72 24 805 353 984 R.C.S. PARIS
TVA : FR29805353984 - N° Agrément : 11 75 52628 75

REF 14115 : HABILITATION Recycling

This training allows the persons concerned :

- To prepare, analyse and carry out an electrical operation on a work or installation or on a consigned device.
- Acquire knowledge of electrical risks
- An upgrade on the prerogatives of the UTE C18510-1 regulation.

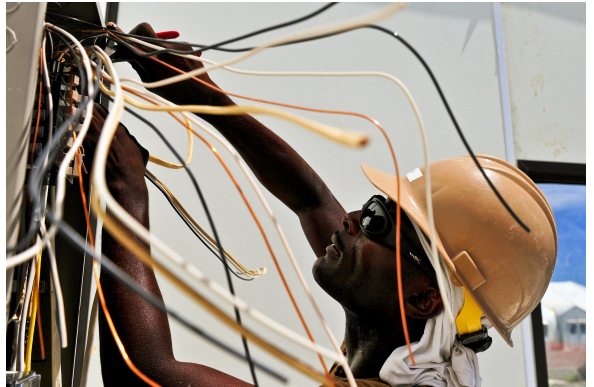
PRE-REQUISITES AND CONTROL PROCEDURES :

- Differentiate between electrical quantities such as current, voltage, resistance, power, alternating and direct current.
- Identify protective devices against direct and indirect contact.
- Identify electrical equipment in its environment.
- Read an electrical diagram and recognise equipment on the basis of its symbols.
- Have an analysis capacity to enable him to acquire sufficient knowledge of the work or installation or the electrical equipment on which he operates.

To ensure that the public has the necessary prerequisites to fully benefit from the teaching, a telephone interview with the Training Manager or the client's HR Director is systematically carried out. During this interview, we study the various positions occupied by the trainee and his current position to ensure that the training is appropriate. On the day of the training an initial individual assessment (QUIZZ of 12 questions) is carried out at the beginning of the session, after the trainees have been welcomed, under the supervision of the trainer who answers the questions but ensures that the test is carried out individually. This evaluation is generally in the form of a QUIZZ but open-ended questions are sometimes added. A correction is systematically made at the end of the test.

OUR EXPERTS :

Each trainer in charge of leading the REF 14115 courses has at least 20 years of professional experience in the fields of operation or maintenance of HVB equipment.



WLE

MORE INFORMATION ?

Please write to us at : melina@wleenergy.fr or contact us at : **+33 (0)1 45 05 72 24**

This training material is the exclusive property of WLEnergy SAS - Any representation or reproduction, even partial, is illicit and may constitute an act of counterfeiting.

WLEnergy SAS

17 rue de l'Amiral Hamelin 75116 Paris - melina@wleenergy.fr - Tel : 01 45 05 72 24 805 353 984 R.C.S. PARIS
TVA : FR29805353984 - N° Agrément : 11 75 52628 75